



2012 MIS Conference: The Return on Investment From Implementing Common Data Standards

Kathy Gosa

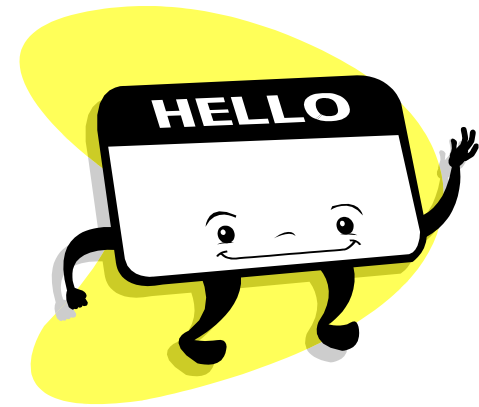
Shawn Bay

Adam Miller



Introductions

- **Kathy Gosa**
 - Director of Information Technology,
Kansas State Department of Education
- **Shawn Bay**
 - Founder, eScholar LLC
- **Adam Miller**
 - Ed-Fi Product Manager,
Michael & Susan Dell Foundation



Our Goals Today



- Summarize the education data standards
- Characterize their cost benefits
- Share real-world perspectives from:
 - A state education agency
 - A software and services vendor
 - A non-profit foundation
- Foster a dialog to lower barriers

The Education Standards Landscape

Key Concepts



- Multiple standards
- Each serves certain roles
- Huge adoption potential
- Understanding is critical
 - *Caveat: We **heavily** summarized the following descriptions, our apologies for any omissions*

CEDS / NCES Handbooks

- **CEDS initiative**

- NCES-led group to define voluntary educational data standards

- **CEDS specification**

- Collection of P-20 educational data elements with data model and tools to exchange and compare education data across org boundaries



ed-fi

- Data specification of K-12 data elements, data model, Web dashboards, and metrics for teachers to improve outcomes for the students in their classroom



SLC / SLI

- **Shared Learning Collaborative (SLC)**
 - Alliance of education organizations using technology to enhance education
- **Shared Learning Infrastructure (SLI)**
 - Platform for teachers to find the resources and tools to address individual student learning needs

LRMI

- Learning Resource Metadata Initiative
- An initiative for tagging diverse educational content to match it with learning objectives



SIFA / SIF

- **SIF Association**

- Collection of educational organizations that define ways for different education data systems to share information

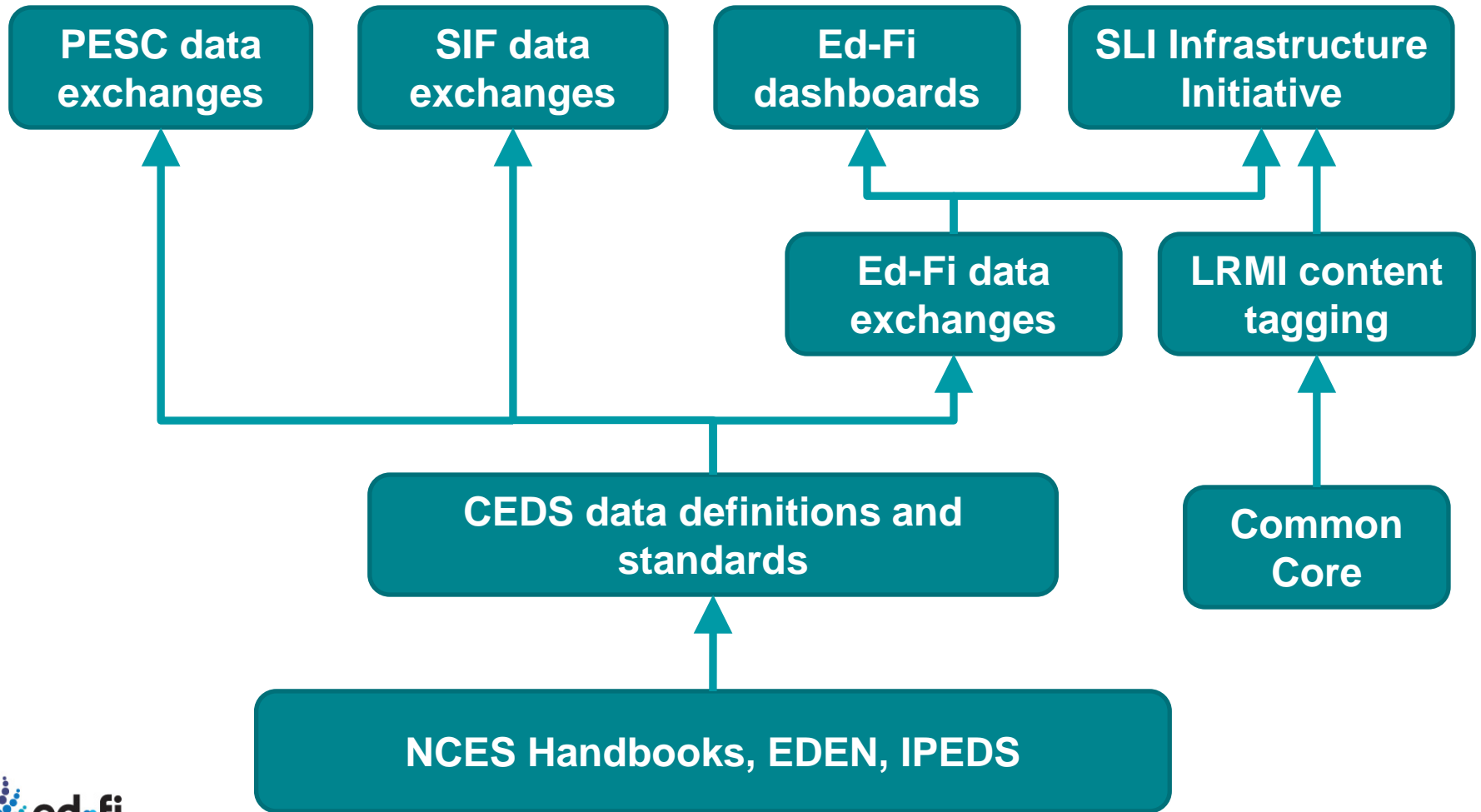
- **Schools Interoperability Framework (SIF)**

- A specification of common data formats, rules of interaction, and architectures for sharing educational data between systems

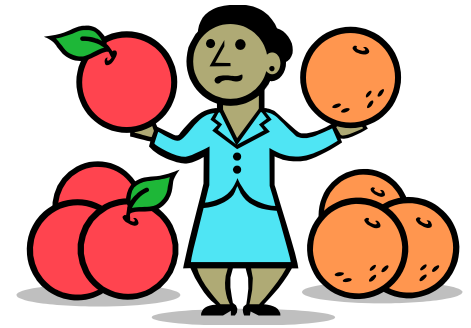
PESC

- **Post-Secondary Electronic Standards Council**
 - Collection of orgs that provide standards for the flow of student data between the K-12, Postsecondary, and PS to federal data collections.
- **PESC Approved Standards**
 - XML schemas
 - Implementation guides
 - Instance documents

How do they fit together?



How do they compare?



- **CEDS** aligns many efforts to a common data model
- **Ed-Fi** data model to drive better student outcomes
- **SLI** uses many standards in a platform for teachers to choose the right educational resources for each student
- **LRMI** links educational content to learning objectives
- **SIF** links data between diverse educational systems
- **PESC** bridges data from K-12, postsecondary and workforce

Standards Self-Assessment

Signs that you need standards



- Hard to export and move data
- Can't mix and match vendor products
- Complications picking the best tools
- Product limitations prevent automation
- Can't use current innovations
- Changes are expensive

Return on Investment

- Not just dollars, modest cost savings at start, more savings long-term
- Moving and modifying data is easier
- Unlock integration scenarios
- New data views, insights, and user experiences
- Laying the foundation for measuring program effectiveness
- Better visibility and more accurate future planning
- **Implementation of data standards is the ONLY way to support efficient personalization of education.**

Next Steps



- Seek your peers
- Re-think your environmental pain and limitations
- Put data standards in your RFPs
- Scope projects with *and* without standards to see deltas
- Scrutinize heavy customization of your environment
- Join the discussion groups, like CEDS

Let the Q&A Begin!



ed-fi

Visit www.ed-fi.org for
more information